

SANTOS























































































































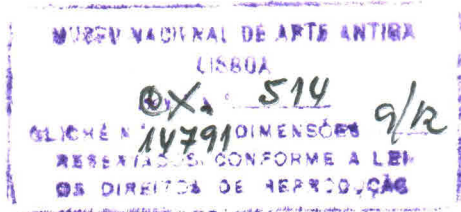




4 S. José 4

Esc. Martin

Juvº 806



612

M. N. A. A. - Lisboa

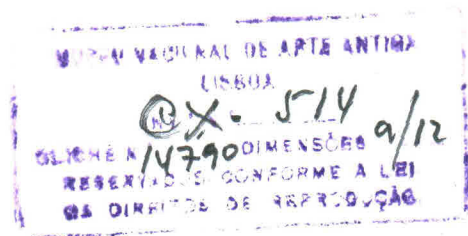




"N<sup>a</sup> Senhora"

Esc. Marfim

Inv.º 805



613

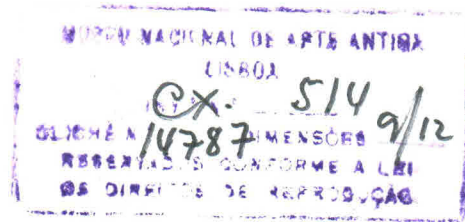
M.N.A.A. - Lisboa



" S<sup>to</sup> António c/o Merino "

Esc. Marfim

Juv<sup>o</sup> 802



618

M.N.A.A. - Lisboa









o

1.IN



British Museum, London, W.C.1.











S.º. Antônio - 842  
S. Francisco - 843

7,5 x 10,5

~~Fig. 2~~

49452



























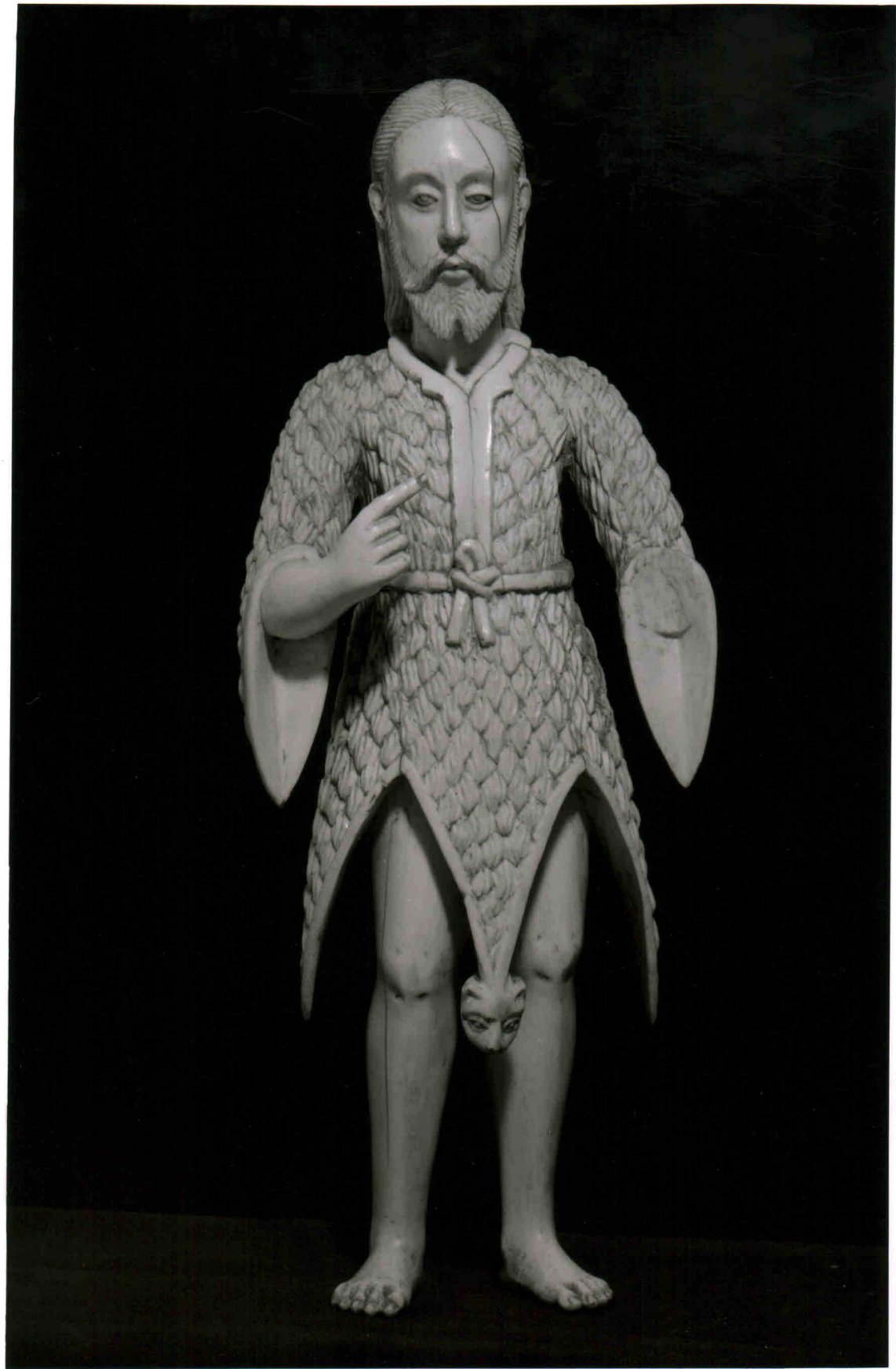
0 1 IN 3 CM

















S. Francisco de Paula

952

Palácio Nacional da Ajuda  
Oratório da Rainha



692  
Victoria and Albert Museum  
A.82-1951

PLEASE DO NOT PHOTOGRAPH TO:  
MUSEUMS KEEP.

ROAD  
D, ESSLA  
Phone: 17 2759

NEGATIVE No. 015/531